

# TripStrip®



[www.ecohellas.gr](http://www.ecohellas.gr)



& : μμ 3-18 - Gr 57019 N. -  
M +30 6944 842451 - T +30 23920 20031 - F +30 23920 21524 - E-mail: [ecognet@otenet.gr](mailto:ecognet@otenet.gr) - U.R.L. [www.ecohellas.gr](http://www.ecohellas.gr)

&

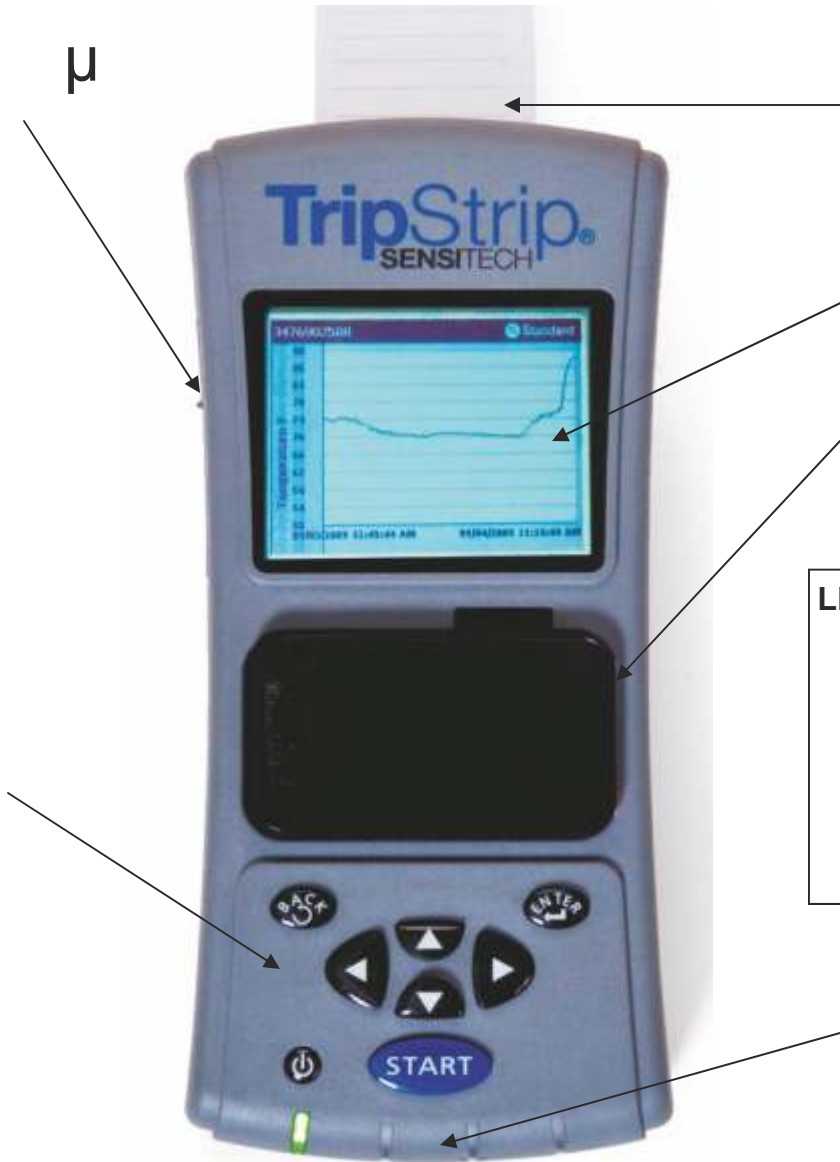
μ

- μ , 58 mm
- μ TT4 ( TT4 USB)
- 3.5" μ B & W LCD μ
- μ μ μ μ
- μ zoom,
- - & μ
- μ μ
- Universal 100-240VAC 12-24 VDC
- μ μ , μ μ
- μ μ μ
- μ μ μ ,



~150 download

I/O  $\mu$

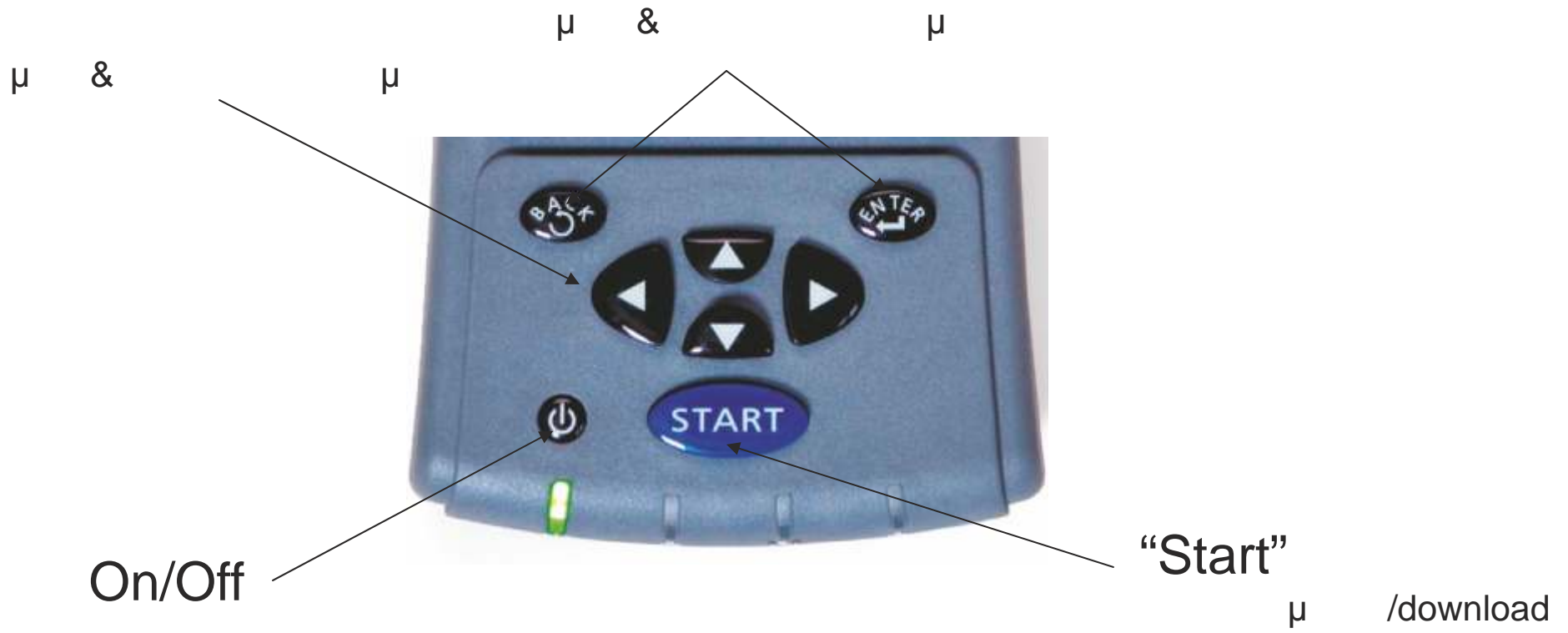


monitor

(IR 9 pin DIN)

**LED Explanation**

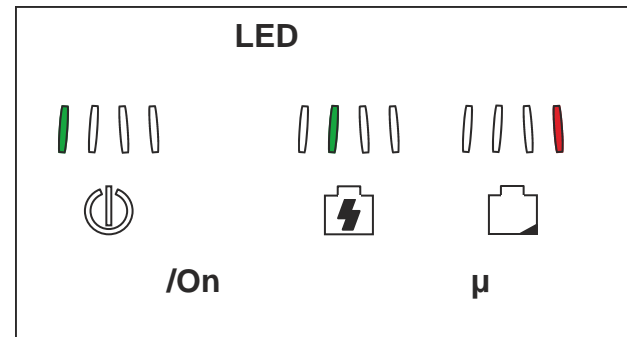
/On			$\mu$



&



- $\mu$   $\mu$
- $\mu$  100-240VAC
- ~ 3-4 hr
- $\mu$  ~ 8 hrs



μ & μμ μ

Menu

- /

- Menu

•

•

- Menu μ

•

•

•

•

•

•

•

•

μ

μ &

μ

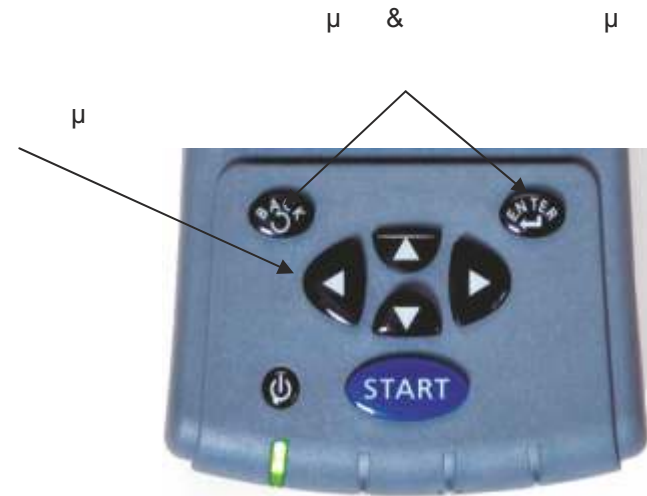
μ μ

μ μ μ /Off

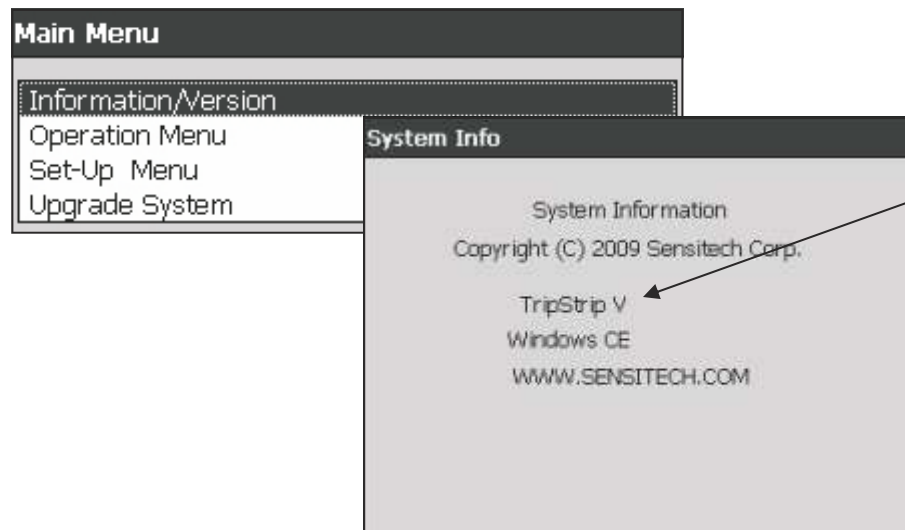
μ

μ μ

o LCD



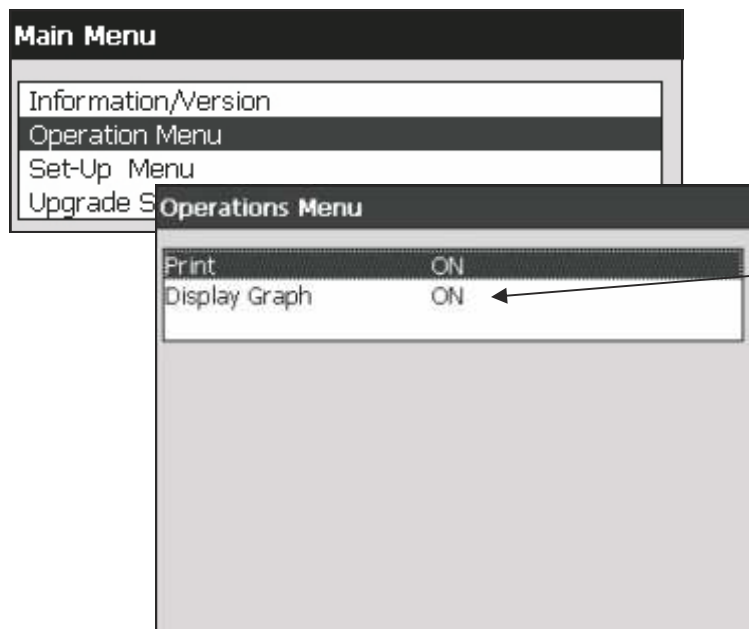
# Menu:



μ : Vx.xx

μ “ ” “Enter”keys enu “Enter” Menu Menu

# Menu: Menu

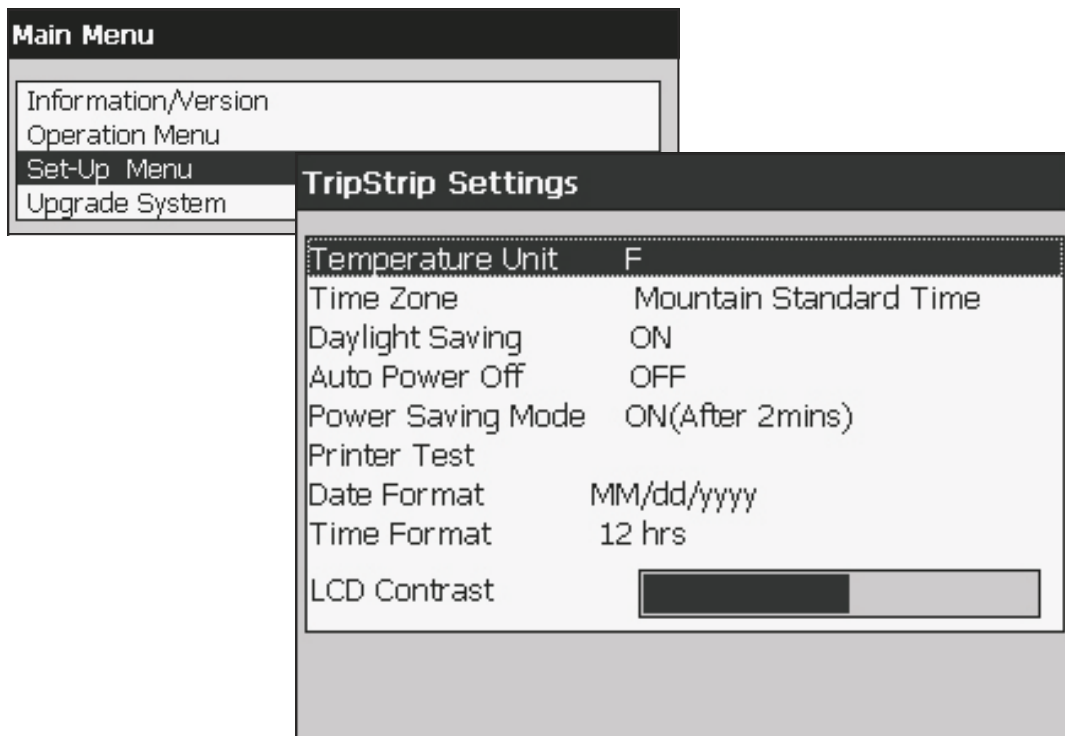


	On	On	Off	Off
$\mu$	On	Off	On	Off
	↓	↓	↓	↓
	↓	↓	$\mu$	
	$\mu$		↓	
	↓			

$\mu$     “ ”    /    “Enter”    -  $\mu$   
 “Back”     $\mu$  /     $\mu$      $\mu$



# Menu: Menu $\mu$



$\mu$  ( F C)  
 $\mu$  (on/off)  
 $\mu$  Off (on/off)  
 $\mu$  (on/off)  
 $\mu$  (m/d/y d/m/y)  
 (12 24)  
 LCD

$\mu$  " " / "Enter"  
 "Back"  $\mu$  /  $\mu$

# Download:

μ

1<sup>st</sup>:

2<sup>nd</sup>:

3<sup>rd</sup>:

(TT4 or Mini)

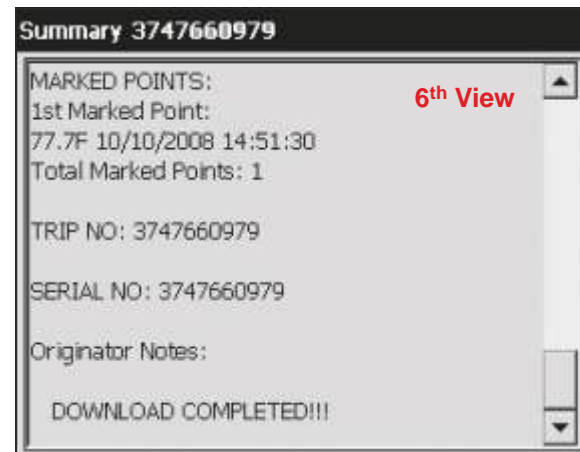
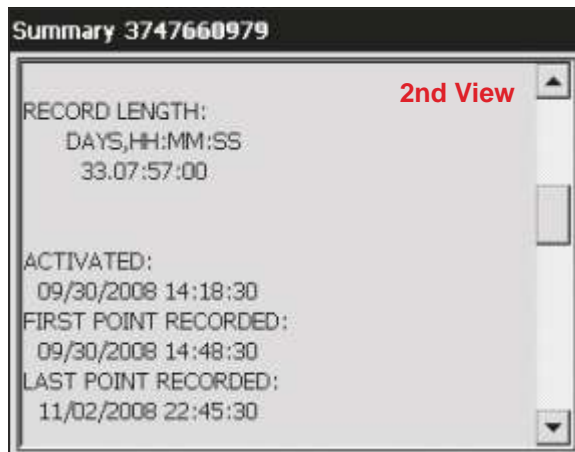
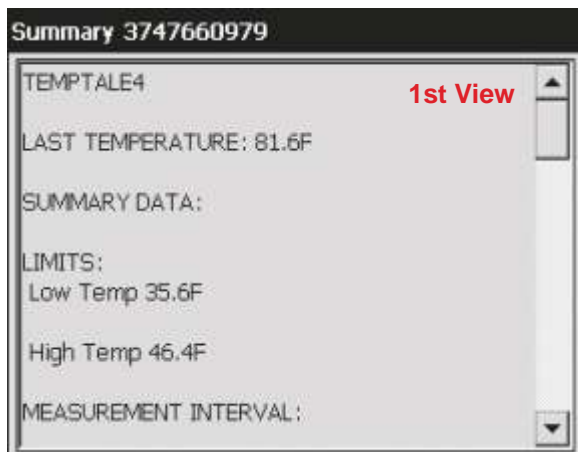
“Start”

μ

μ

μ

/download



“ ”

# Download:

μ

11

μ  
& TripStrip

μ /Display Graph,  
μ μ

“Enter”

μ

“Enter”

μ .

μ

“ ”

μ μ enter/exit Zoom mode .

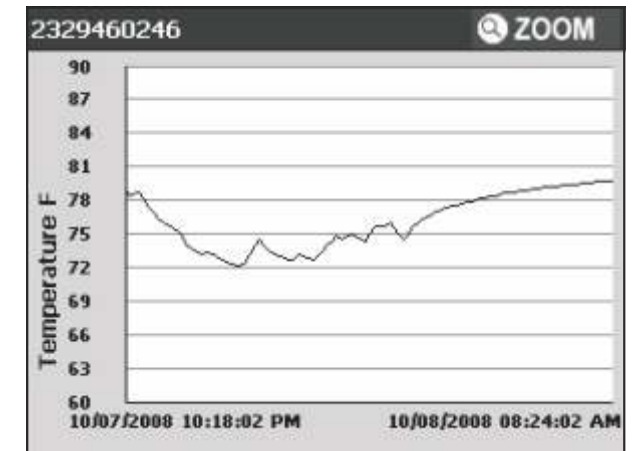
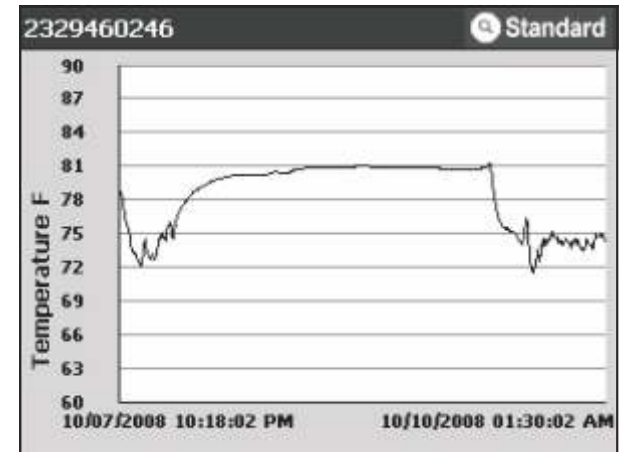
“?? ”

μ

Zoom .

Back

μ



Download:

μ & μ

μ Print/ TripStrip

μ /

μ

μ

μ

μ

μ

μ

μ

μ

(hrs or days)

μ

μ

μμ

μμ

μ

~30-40s

monitors 2k

μ

:

High/Low

μ

μ

μ

μ

/

,

μ

,

μ

,

μ

μ

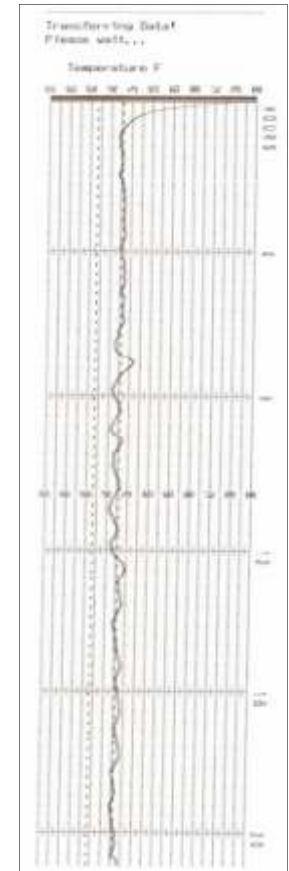
-#

μ

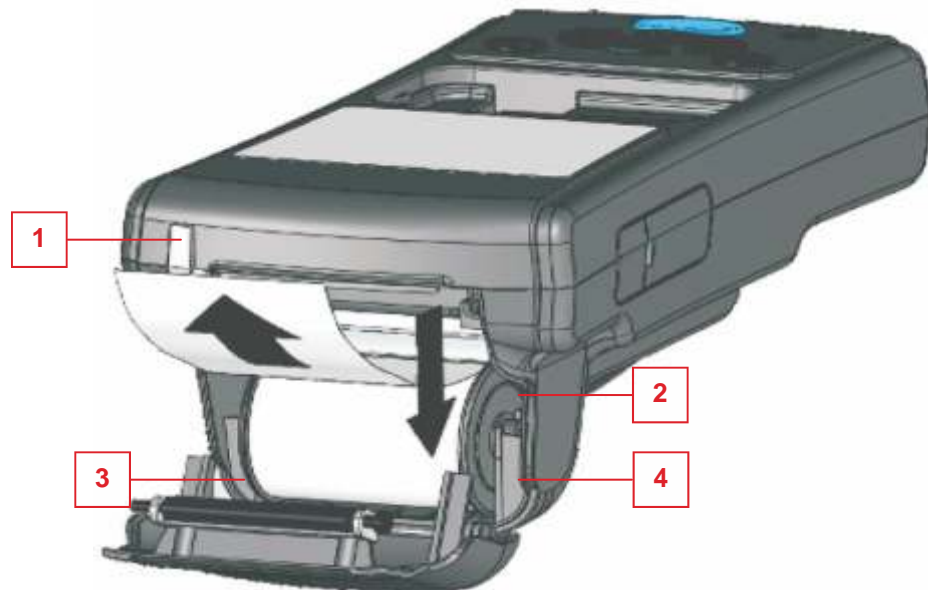
/

```

TEMPLE4
LAST TEMPERATURE: 37.5F
SUMMARY DATA
LIMITS
  LowTemp  28F
  HighTemp 36F
MEASUREMENT INTERVAL:
  DAYS, HH:MM:SS
  00: 10:00
STARTUP DELAY: 30 mins 0
RECORD LENGTH
  DAYS, HH:MM:SS
  5, 01:00:00
ACTIVATED:
  04252009  11:23:39 AM
FIRST POINT RECORDED:
  04252009  11:53:39 AM
LAST POINT RECORDED:
  04302009  12:53:39 PM
TEMPERATURE EXTREMES:
36.8F 04262009 03:53:39 AM
47.9F 04302009 04:53:39 AM
POINTS RECORDED: 727
OVER TEMP. LIMIT
  First: 04252009 11:53:39 AM
  Last:  04302009 12:53:39 PM
  Total Time:
    DAYS, HH:MM:SS
    22:30:00
UNDER TEMP. LIMIT:
  First: 04252009 03:13:39 PM
  Last:  04252009 04:23:39 AM
  Total Time:
    DAYS, HH:MM:SS
    12:10:00
MARKED POINTS
  First: None
  Last:  None
Total Marked Points: None
TRIP NO: 3484904529
SERIAL NO: 3484904529
Originator Notes
  DOWNLOAD COMPLETE
  
```



1. μ
2. μ
3. μ μ
4. μ ( μ μ μ



μ

\_\_\_\_\_ : T5500-01

\_\_\_\_\_ : TripStrip Universal Printer

\_\_\_\_\_ μ : 850€

\_\_\_\_\_ μ :

TripStrip

AC

μ μ (North American plug)  
( )

:

5 (T5000-04)

μ (T5502-01)

μ DC/DC (T5501-01)

μ

- μ μ
- μ
  - T5000-01 US-D/C TRIPSTRIP
  - T5000-02 US-A/C TRIPSTRIP
  - T5100-01 EUROPEAN-D/C TRIPSTRIP
  - T5100-02 EUROPEAN –A/C TRIPSTRIP
  - T5700-02 US AC PRIVATE LABEL TRIPSTRIP
  - T5000-03/T5100-03 A/C ADAPTORS/CORDS
  - T5000-16/T5100-16 D/C ADAPTORS/CORDS
- & μ :
  - μ
  - , *Sensitech* μ .